

Expand Your Reach into Latin America

Connect to More Viewers Through Intelsat's Pan-American Satellite Video Neighborhoods



Latin American Media Distribution Made Easy

For cable and broadcast distribution, success is about reaching as many viewers in as many places as possible. Whether you seek a broader regional audience or to expand globally, Intelsat's video neighborhoods connect your content with the world's prime cable and broadcast systems, with immediate access to the maximum global audience.

In Latin America, Intelsat offers the premier cable distribution neighborhood with four high-performance, fully penetrated satellites carrying the biggest programming names from around the globe.

- More than 670 channels (264 HD) are carried on Intelsat 21, Intelsat 11, Intelsat 34, and Intelsat 14
- Intelsat distributes more channels to cable subscribers in Latin America than any other satellite operator
- 77 of the top 100 most-watched channels are delivered by Intelsat
- 100% coverage in Latin America with connectivity to Europe, Africa and Asia
- Unique four satellite neighborhood offers unsurpassed coverage, flexibility, resilience and scalability

Intelsat's video neighborhoods are seamlessly integrated with IntelsatOne®, our terrestrial network that incorporates IP/MPLS fiber, teleports and points of presence. Plus, our MCPC platforms allow programmers to cost-effectively launch new channels quickly, making Intelsat the best commercial option to expand your audience.

About Intelsat

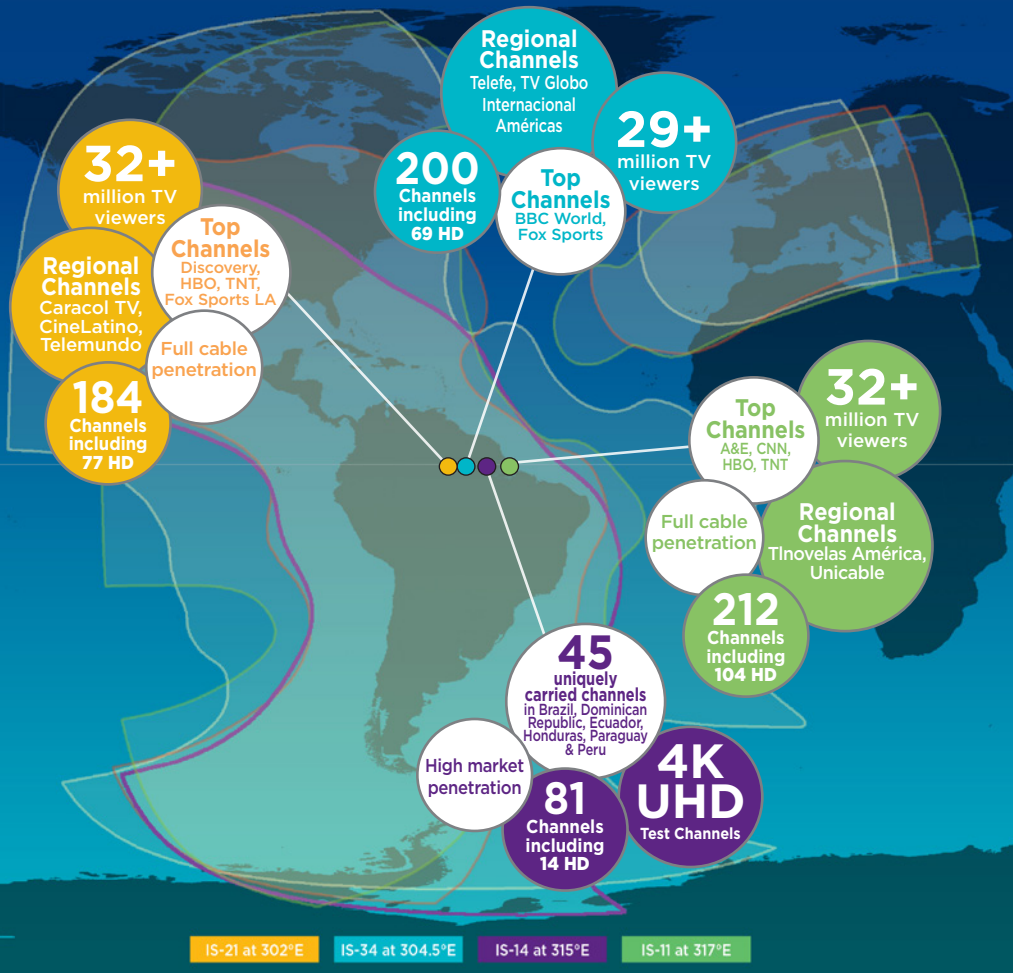
As the foundational architects of satellite technology, Intelsat operates the largest, most advanced satellite fleet and connectivity infrastructure in the world. We apply our unparalleled expertise and global scale to reliably and seamlessly connect people, devices and networks in even the most challenging and remote locations.

Transformation happens when businesses, governments and communities build a ubiquitous connected future through Intelsat's next-generation global network and simplified managed services.

At Intelsat, we turn possibilities into reality. Imagine Here, with us, at Intelsat.com.



Latin America's premier cable distribution neighborhood with four high-performance, fully penetrated satellites carrying the biggest programming names from around the globe.



Contact Sales

Africa

+27 11-535-4700
sales.africa@intelsat.com

Asia-Pacific

+65 6572-5450
sales.asiapacific@intelsat.com

Europe

+44 20-3036-6700
sales.europe@intelsat.com

Latin America & Caribbean

+1 305-445-5536
sales.lac@intelsat.com

Middle East & North Africa

+971 4-390-1515
sales.mena@intelsat.com

North America

+1 703-559-6800
sales.na@intelsat.com

www.intelsat.com

Intelsat 21 at 302°E

- Premier pan-regional cable distribution neighborhood for many global Tier-1 programmers
- Reaches more than 32 million cable subscribers
- Highest cable headend penetration Latin America – close to 100%
- 184 channels (77 HD) – second highest number of HD channels
- Carries more top-rated channels than other operators in the region
- MCPC platform allows quick and cost effective channel launches
- Asia and Europe connectivity

Featured Programmers

Discovery, FOX, HBO, Turner, NHK, MVS, Caracol

Intelsat 34 at 304.5°E

- Premier pan-regional cable distribution neighborhood for many global Tier-1 programmers
- Reaches more than 29 million cable subscribers
- 200 channels (69 HD) – third highest number of HD channels
- Carries more top-rated channels than other operators in the region
- Asia, Europe and Africa connectivity
- DVB-S2 MCPC Platform for quick and cost effective channel launches

Featured Programmers

HBO, FOX, Viacom, Telefe

Intelsat 14 at 315°E

- Intelsat's newest cable neighborhood satellite for Latin America
- Offering growth for Premier pan-regional program distribution
- DVB-S2 MCPC platform offering managed video distribution service for quick and cost effective channel launches
- NASA 4K UHD feed
- 40+ channels uniquely distributed and fully penetrated in Brazil, Dominican Republic, Ecuador, Honduras, Paraguay & Peru

Featured Channels

Brazil: TV Ponta Verde and TV Urbana Outdoor

Dominican Republic: CDN, CDN Sports Max, Televisa

Ecuador: TC TV

Honduras: Telecadena 7 y 4, TSi, VTV

Paraguay: SNT

Peru: TV Peru

Intelsat 11 at 317°E

- Premier pan-regional cable distribution neighborhood
- Reaches more than 32 million cable subscribers
- Full penetration in Latin America
- 212 channels (104 HD) – more HD channels than any other satellite
- Carries more top-rated channels than other operators in the region
- Europe connectivity

Featured Programmers

FOX, Turner, Discovery, Televisa, Arterax

